

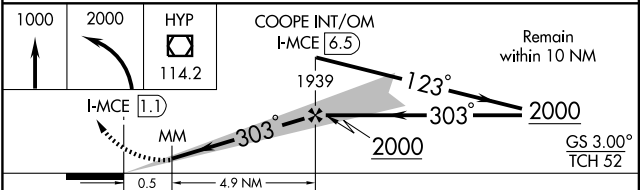
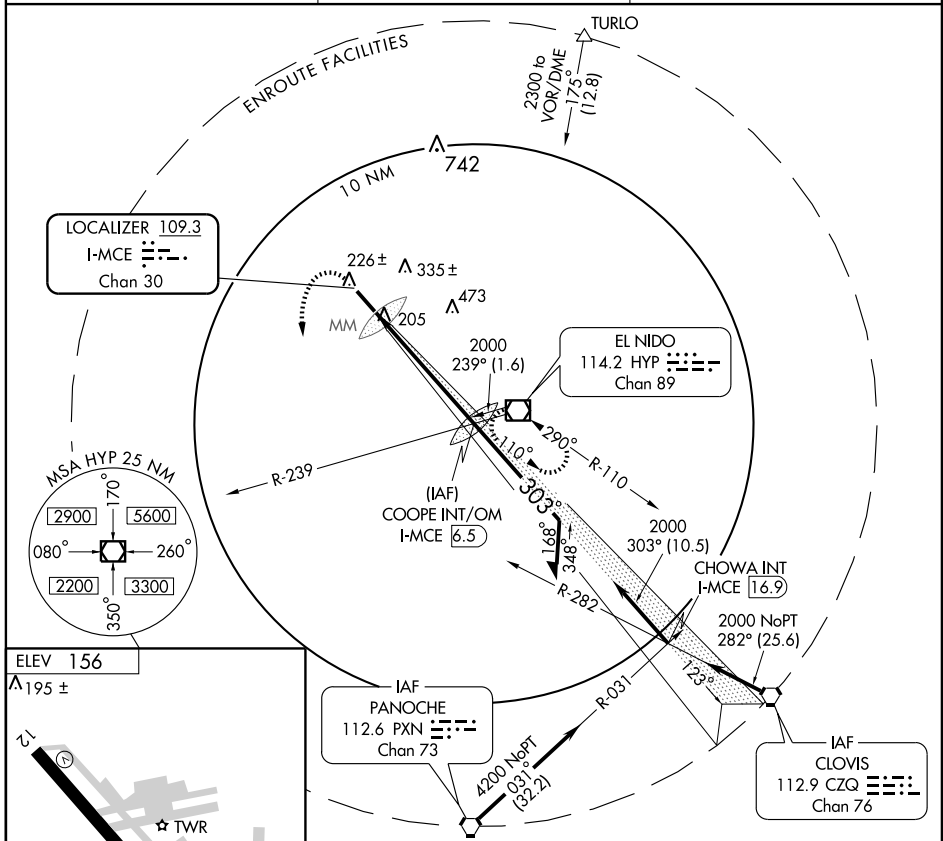
ILS RWY 30

MERCED MUNI-MACREADEY FIELD (MCE)

LOC/DME I-MCE 109.3 Chan 30	APP CRS 303°	Rwy Idg 5903 TDZE 156 Apt Elev 156
---	------------------------	---

<p>▼ For inoperative MALS increase S-LOC 30 Cat D visibility to 1. ▲ Circling not authorized northeast of Rwy 12-30.</p>	<p>MALS</p>	<p>MISSED APPROACH: Climb to 1000 then climbing left turn to 2000 direct HYP VOR/DME and hold.</p>
--	-------------	--

ASOS 132.175	NORCAL APP CON 120.95 269.45	UNICOM 122.7 (CTAF) 0
------------------------	--	--



HIRL Rwy 12-30 0	REIL Rwy 12	FAF to MAP 5.4 NM			
Knots	60	90	120	150	180
Min:Sec	5:24	3:36	2:42	2:10	1:48

CATEGORY	A	B	C	D
S-ILS 30	356-1/2		200 (200-1/2)	
S-LOC 30	480-1/2		324 (400-1/2)	
CIRCLING	540-1 384 (400-1)	620-1 464 (500-1)	620-1 1/2 464 (500-1 1/2)	720-2 564 (600-2)

SW-2, 16 MAR 2006 to 13 APR 2006

SW-2, 16 MAR 2006 to 13 APR 2006