

LOC/DME I-MCE 109.3 Chan 30	APP CRS 123°	Rwy Idg TDZE 155 Apt Elev 156	5903
---	------------------------	---	-------------

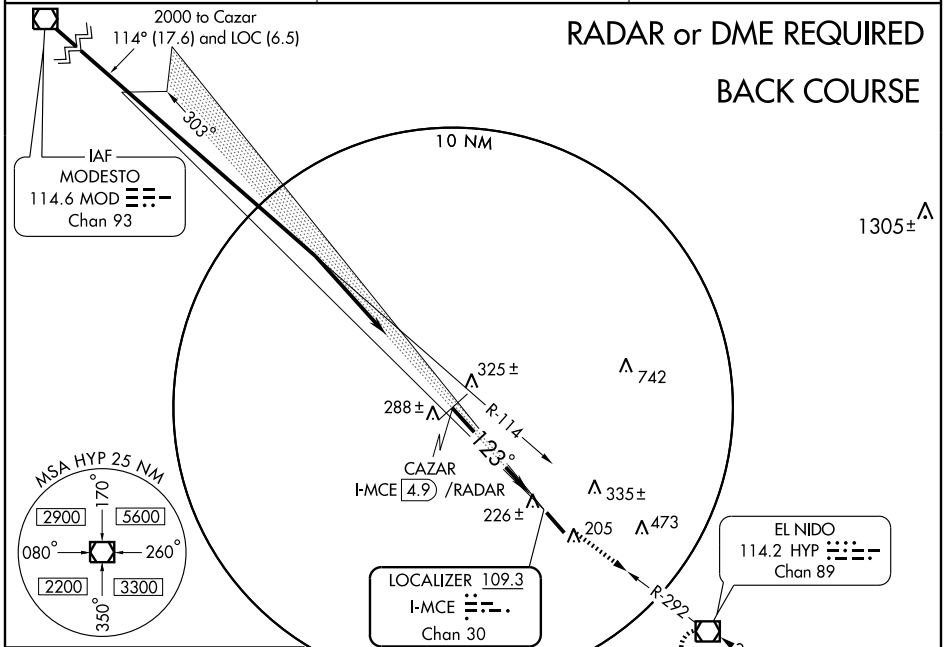
LOC BC RWY 12

MERCED MUNI-MACREADY FIELD (MCE)

⚠ Circling not authorized northeast of Rwy 12-30.
⚠ MISSED APPROACH: Climb to 2000 via HYP R-292 to HYP VOR/DME and hold.

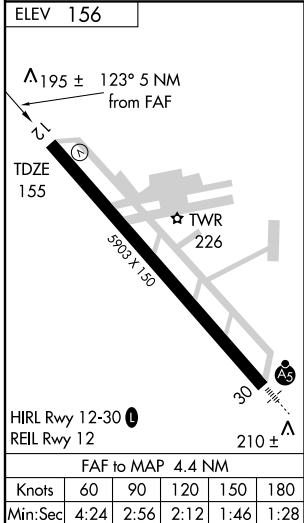
ASOS 132.175	NORCAL APP CON 120.95 269.45	UNICOM 122.7 (CTAF) Ⓛ
------------------------	--	--

RADAR or DME REQUIRED
BACK COURSE



SW-2, 16 MAR 2006 to 13 APR 2006

SW-2, 16 MAR 2006 to 13 APR 2006



Procedure Turn NA	2000	2000	HYP	114.2
VGSI and descent angles not coincident.				
Disregard glide slope indications.				

CATEGORY	A	B	C	D
S-12	520-1	365 (400-1)		520-1½ 365 (400-1½)
CIRCLING	540-1 384 (400-1)	620-1 464 (500-1)	620-1½ 464 (500-1½)	720-2 564 (600-2)