

MERCED, CALIFORNIA

AL-665 (FAA)

# VOR RWY 12

MERCED MUNI-MACREADY FIELD (MCE)

VOR/DME HYP <b>114.2</b> Chan <b>89</b>	APP CRS <b>112°</b>	Rwy Idg TDZE <b>155</b> Apt Elev <b>156</b>	<b>5903</b>
---	------------------------	---	-------------

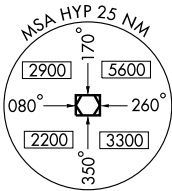
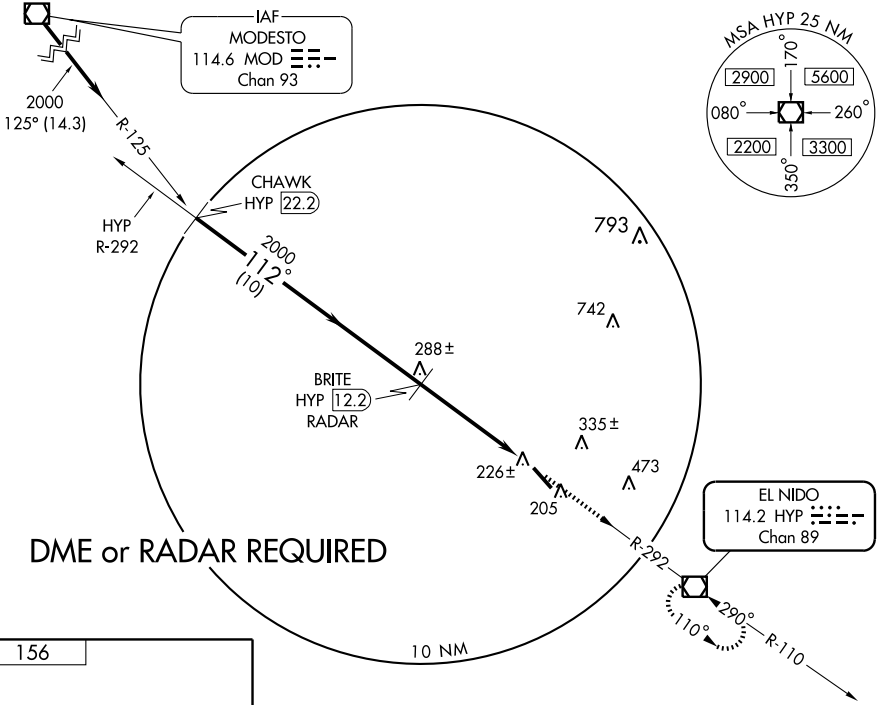
**⚠** Circling not authorized northeast of Rwy 12-30.

MISSED APPROACH: Climb to 2000 via HYP R-292 to HYP VOR/DME and hold.

ASOS  
**132.175**

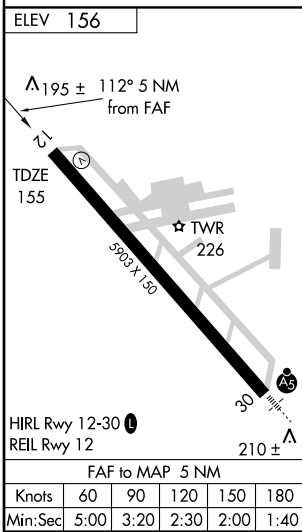
NORCAL APP CON  
**120.95 269.45**

UNICOM  
**122.7** (CTAF) **📻**



SW-2, 16 MAR 2006 to 13 APR 2006

SW-2, 16 MAR 2006 to 13 APR 2006



	CHAWK HYP (22.2)	BRITE HYP (12.2) RADAR	2000 HYP	HYP 114.2
	Procedure Turn NA		↑ HYP R-292	📻
	2000	2000	HYP (7.2)	
	VGSI and descent angles not coincident.		3.39° TCH 47	
	10 NM		5 NM	
CATEGORY	A	B	C	D
S-12	520-1 365 (400-1)		520-1½ 365 (400-1½)	
CIRCLING	540-1 384 (400-1)	620-1 464 (500-1)	620-1½ 464 (500-1½)	720-2 564 (600-2)

MERCED, CALIFORNIA  
Amdt 7B 03135

37°17'N-120°31'W

MERCED MUNI-MACREADY FIELD (MCE)  
**VOR RWY 12**