

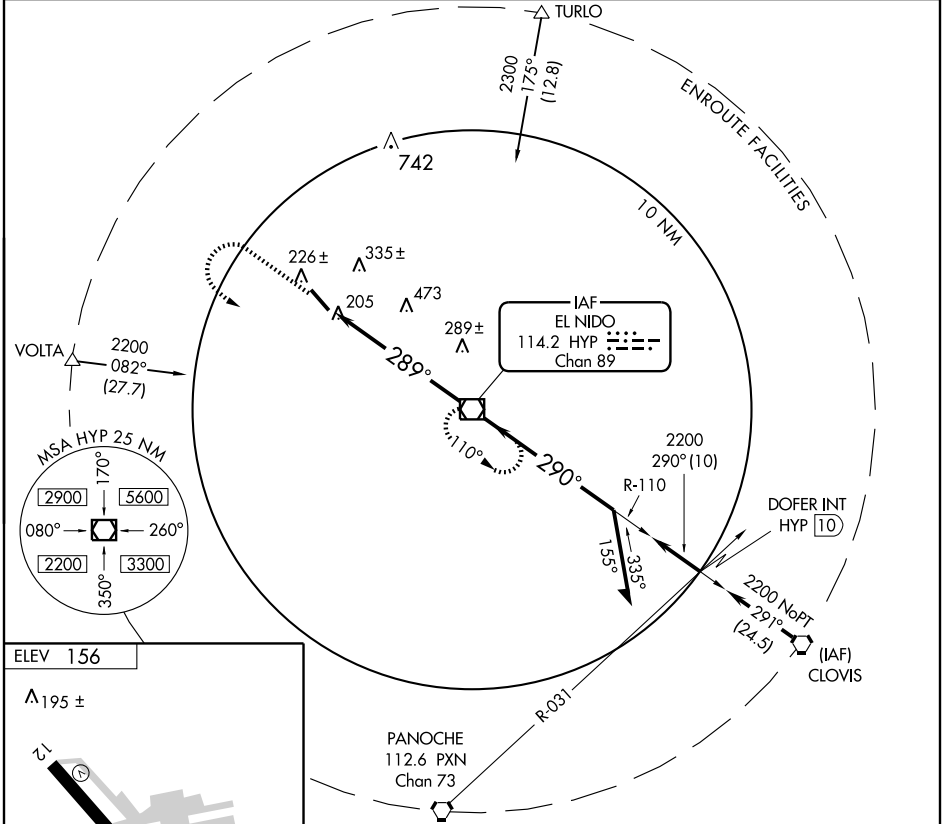
VOR RWY 30

MERCED MUNI-MACREADY FIELD (MCE)

VOR/DME HYP 114.2 Chan 89	APP CRS 289°	Rwy Idg 5903 TDZE 156 Apt Elev 156
---	------------------------	---

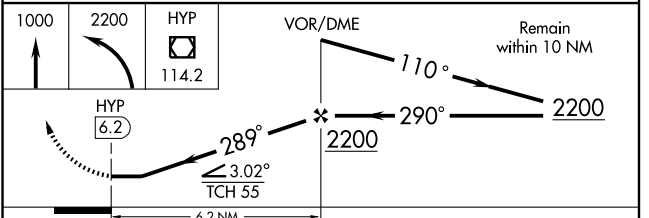
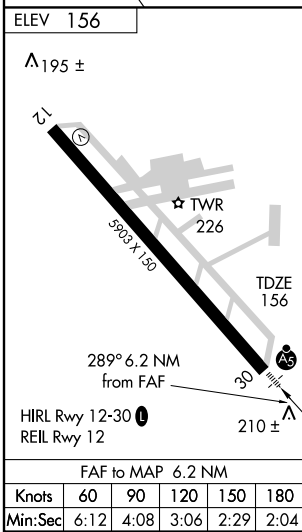
<p>⚠ Circling not authorized northeast of Rwy 12-30. For inoperative MALSRL increase S-30 Cat D visibility to 1¼.</p>	<p>MALSRL </p>	<p>MISSED APPROACH: Climb to 1000 then climbing left turn to 2200 direct HYP VOR/DME and hold.</p>
---	--	--

ASOS 132.175	NORCAL APP CON 120.95 269.45	UNICOM 122.7 (CTAF)
------------------------	--	-------------------------------



SW-2, 16 MAR 2006 to 13 APR 2006

SW-2, 16 MAR 2006 to 13 APR 2006



CATEGORY	A	B	C	D
S-30	540-½	384 (400-½)		540-1 384 (400-1)
CIRCLING	540-1 384 (400-1)	620-1 464 (500-1)	620-1½ 464 (500-1½)	720-2 564 (600-2)