

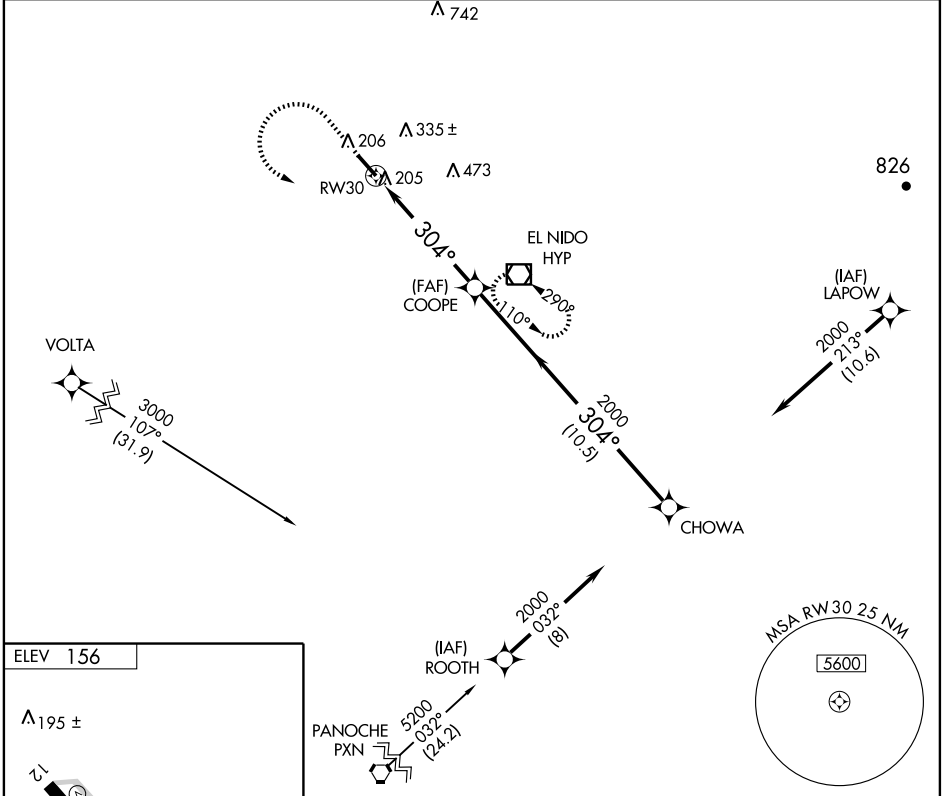
# GPS RWY 30

MERCED MUNI-MACREADY FIELD (MCE)

APP CRS	Rwy Idg	<b>5903</b>
<b>304°</b>	TDZE	<b>156</b>
	Apt Elev	<b>156</b>

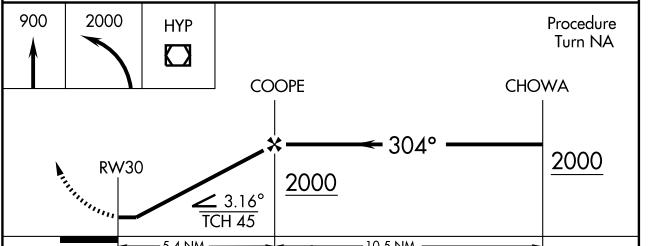
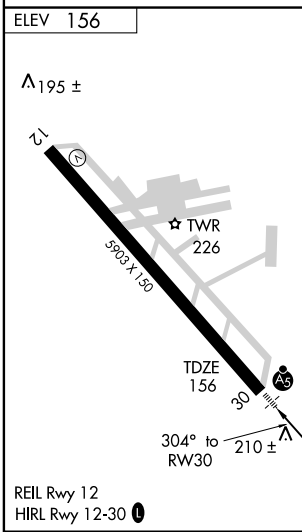
<p><b>▽</b> For inoperative MALSR increase S-30 Cat D visibility to 1¼.</p> <p><b>△ NA</b> Circling not authorized northeast of Rwy 12-30.</p>	<p><b>MALSR</b></p>	<p><b>MISSED APPROACH:</b> Climb to 900 then climbing left turn to 2000 direct HYP VOR/DME and hold.</p>
--	---------------------	--

ASOS <b>132.175</b>	NORCAL APP CON <b>120.95 269.4</b>	UNICOM <b>122.7 (CTAF) 0</b>
------------------------	---------------------------------------	---------------------------------



SW-2, 16 MAR 2006 to 13 APR 2006

SW-2, 16 MAR 2006 to 13 APR 2006



CATEGORY	A	B	C	D
S-30	520-½ 365 (400-½)			520-1 365 (400-1)
CIRCLING	540-1 384 (400-1)	620-1 464 (500-1)	620-1½ 464 (500-1½)	720-2 564 (600-2)