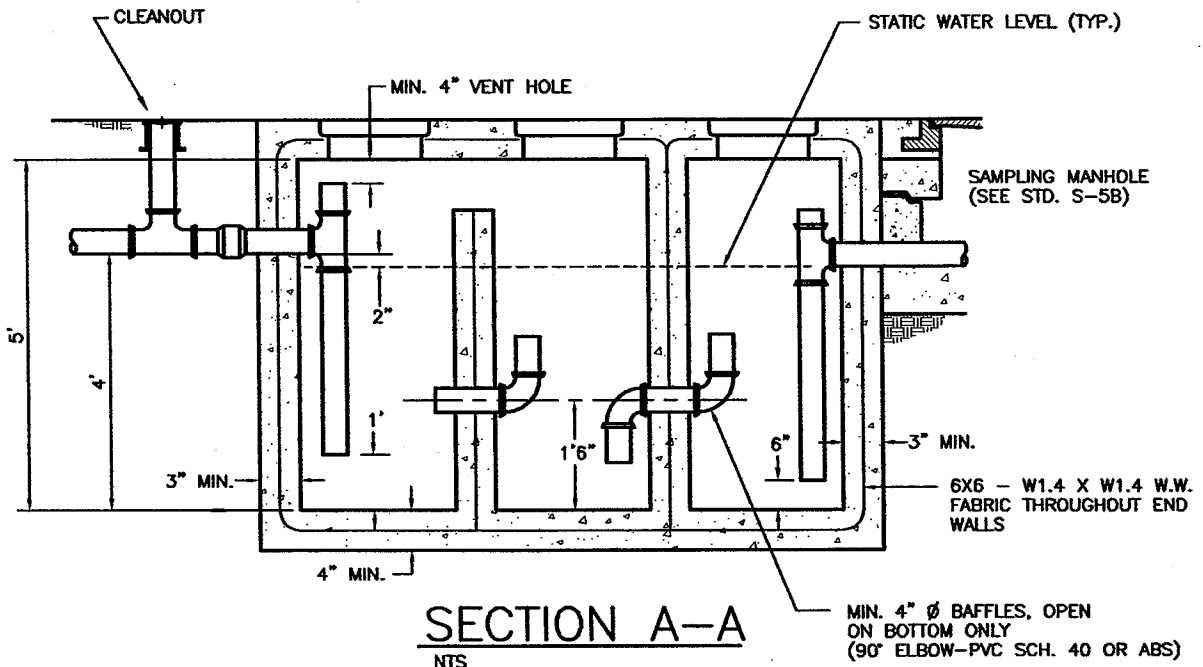


PLAN

NTS



SECTION A-A

NTS

NOTES

1. CONCRETE SHALL BE MINIMUM 3000 PSI AT 28 DAYS.
2. COVERS SHALL BE STEEL AND SHALL BE GAS TIGHT. COVERS SHALL BE SUBJECT TO THE APPROVAL OF THE CITY ENGINEER.
3. REINFORCEMENT SHALL BE ADEQUATE FOR TRAFFIC CONDITIONS IN AREA WHERE INTERCEPTOR IS LOCATED AND SHALL CONFORM TO ASTM A615-62T & A305-T.

ENGINEERING DEPARTMENT

CITY OF MERCED, CA.

TYPICAL SAND AND OIL INTERCEPTOR

S-5A

DRAWN: KGE

APPROVED BY:

DATE

ENG.

David L. Tucker

01/22/02

REVISED: 1/02

CITY ENGINEER

SHEET

OF