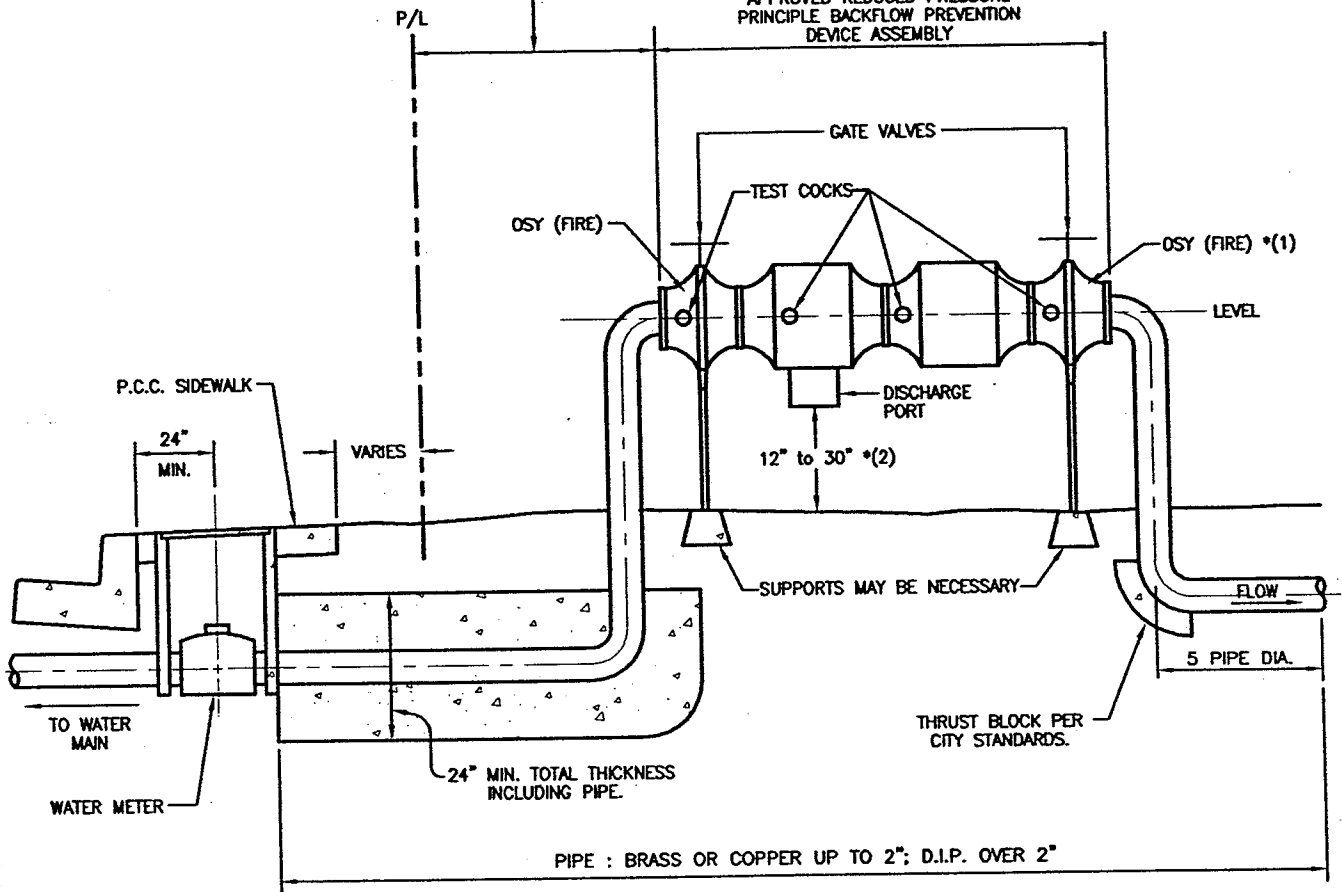
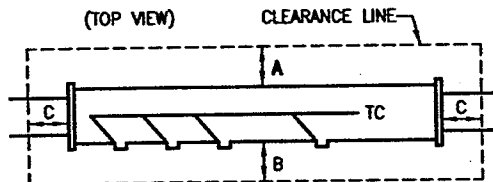


LOCATION MUST BE APPROVED BY CITY ENGINEER PRIOR TO INSTALLATION.

APPROVED REDUCED PRESSURE PRINCIPLE BACKFLOW PREVENTION DEVICE ASSEMBLY



MINIMUM CLEARANCE			
SIZE / DC	A	B	C
1" - 3"	12"	18"	12"
4" & UP	24"	24"	12"



SEE CITY STANDARDS W-17 FOR ADDITIONAL REQUIREMENTS

- *(1) - FIRE SPRINKLER SYSTEMS REQUIRE OSY VALVES; FOR DOMESTIC USE 3" AND LARGER, USE NRS VALVES.
- *(2) - MUST BE ABOVE 100-YEAR FLOOD ELEVATION ESTABLISHED BY FEMA.

ENGINEERING DEPARTMENT		CITY OF MERCED, CA.	
REDUCED PRESSURE PRINCIPLE BACKFLOW PREVENTER			W-9
DRAWN: KGE	APPROVED BY: <i>David L. Tucker</i>	DATE: 01/22/02	SHEET _____ OF _____
DATE:	CITY ENGINEER		
REVISED: 11/01			