

CITY OF MERCED
Engineering Department

TO: Bicycle Advisory Commission
FROM: John C. Sagin, Jr. AIA – Senior Architect
DATE: February 23, 2016
SUBJECT: Bear Creek Bikeway Projects – Alternative Designs

ACTION REQUIRED:

Information item and opportunity to comment.

BACKGROUND

The City is planning the redesign of a Class I Bike path. The current bike path is constructed along various segments of the Bear Creek Corridor. However the corridor is missing a few segments that once completed would connect a variety of residential areas with existing commercial centers.

The City is planning on submitting this third project for the next Cycle 3 ATP Grant “Call for Projects” which is due in June 2016.

The City is looking for ideas to make the connections similar to the original sketch submitted.

DISCUSSION

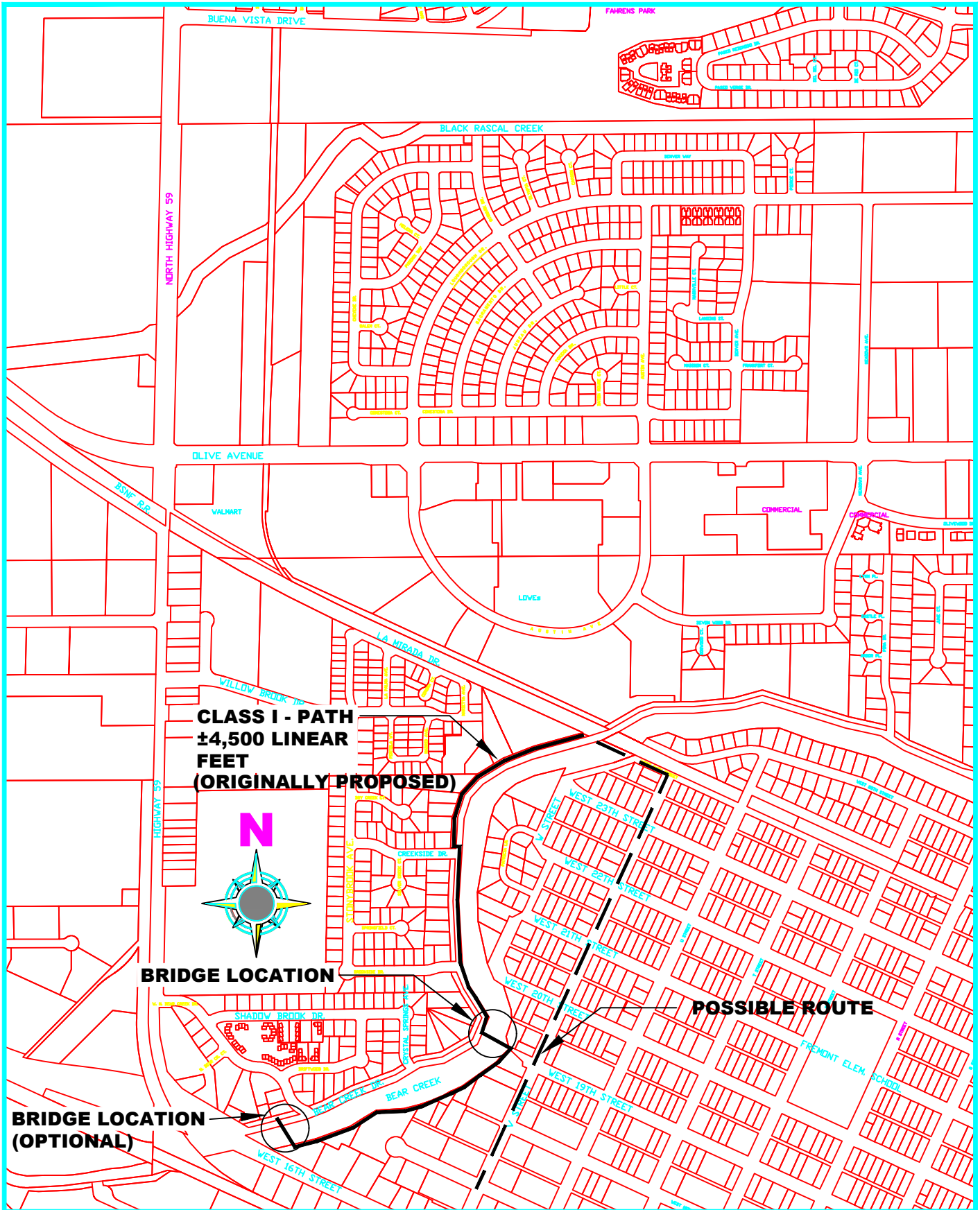
The City is open to any and all suggestions.

ACTION

The BAC is invited to review and comment.

Attachment

- A. Original Bike Path Project map



I:\Joel\ATP Cycle 3 Bike Path Bear Creek.dwg



City of Merced
"Gateway to Yosemite"

DEVELOPMENT SERVICES
ENGINEERING PROJECTS AND STANDARDS
678 W. 18th Street (209) 385-6846

ATP PROJECTS
BEAR CREEK BIKE PATH CONNECTION
16TH STREET / BUENA VISTA ROAD
ATTACHMENT A

DR. BY: JS
DATE: 2/18/16
CH. BY: ##
DATE: 3/1/11
File No. 0876
SCALE: AS SHOWN