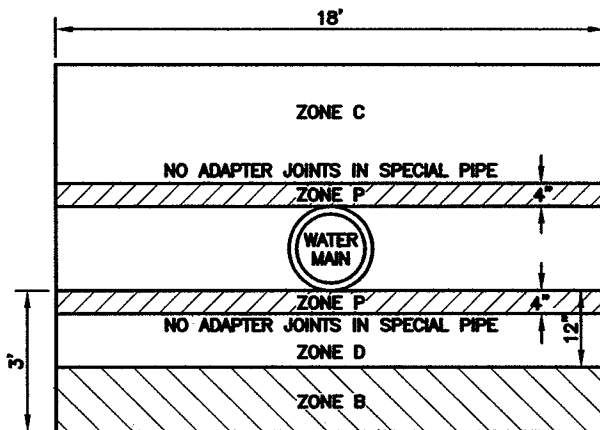


PARALLEL CONSTRUCTION



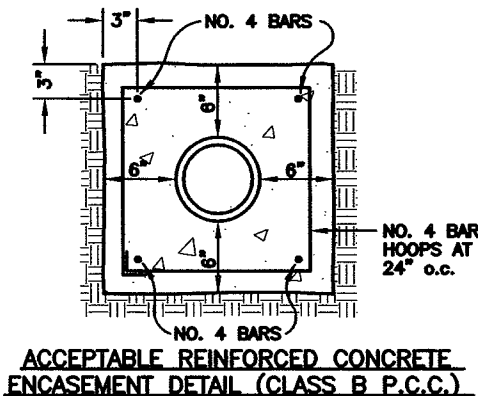
PERPENDICULAR CONSTRUCTION

CASE I - NEW SEWER - EXISTING WATER MAIN

- ZONE A** - SEWER LINES WILL NOT BE PERMITTED IN THIS ZONE WITHOUT SPECIAL PERMISSION FROM DEPARTMENT OF HEALTH.
- ZONE B** - EXTRA STRENGTH VITRIFIED CLAY PIPE WITH COMPRESSION JOINTS; OR RUBBER GASKETED PLASTIC PIPE CONFORMING TO ASTM D3034-81 SDR-35 SPECIFICATIONS.
- ZONE C/D** - WHERE SEWER WILL CARRY FLOW FROM INDUSTRIAL OR COMMERCIAL DEVELOPMENT CLASS 50 OR HEAVIER DUCTILE IRON PIPE WITH STANDARD BITUMINOUS COATING AND APPROVED MECHANICAL JOINTS SHALL BE USED. WHERE SEWER WILL CARRY FLOWS FROM RESIDENTIAL DEVELOPMENTS ONLY DUCTILE IRON PIPE AS ABOVE, CLASS 200 PVC (DR14 PER AWWA C900) PLASTIC PIPE OR RUBBER GASKETED PIPE CONFORMING TO ASTM D3034-81 SDR-35 SPECIFICATION MAY BE USED. IN EACH CASE A MINIMUM OF 18 FOOT LENGTH OF PIPE WITH NO JOINTS SHALL BE CENTERED AT THE WATER MAIN. NO ADAPTER JOINTS WILL BE ALLOWED CLOSER THAN 8 FEET TO THE WATER LINE.

CASE II - NEW WATER MAIN - EXISTING SEWER

- ZONE A** - NO WATER MAINS SHALL BE CONSTRUCTED WITHOUT SPECIAL PERMISSION FROM THE DEPARTMENT OF HEALTH.
- ZONE B** - IF THE SEWER DOES NOT MEET THE ZONE 'B' REQUIREMENTS GIVEN ABOVE, THE WATER MAIN SHALL BE OF CLASS 200 PIPE OR EQUIVALENT.
- ZONE C** - NO WATER MAIN SHALL BE CONSTRUCTED WITHOUT SPECIAL PERMISSION FROM THE DEPARTMENT OF HEALTH. IF PERMISSION IS GRANTED, THE SEWER SHALL BE ENCASED WITH REINFORCED CONCRETE, AS DETAILED BELOW, OR RECONSTRUCTED PER CASE I ZONE C/D REQUIREMENTS.
- ZONE D** - THE SEWER MAIN SHALL BE ENCASED WITH REINFORCED CONCRETE, AS DETAILED BELOW, OR RECONSTRUCTED PER CASE I ZONE C/D REQUIREMENTS.
- ZONE P** - PROHIBITED CONSTRUCTION ZONE.



NOTE:

1. SEWER LINES LARGER THAN 24" DIAMETER, HOUSE LATERALS ABOVE PRESSURE WATER MAINS AND SEWER MAINS, SHALL BE REVIEWED AND APPROVED BY THE HEALTH DEPARTMENT.

ENGINEERING DEPARTMENT

CITY OF MERCED, CA.

PROTECTION OF WATER LINES FROM SANITARY SEWER

DRAWN: KGE
DATE: 7/3/84
REVISED: 3/17/08

APPROVED BY: *[Signature]*
CITY ENGINEER

DATE: 3/17/08

W-1

SHEET OF