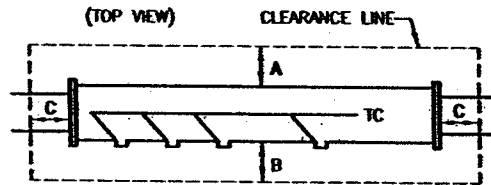


| MINIMUM CLEARANCE |  | A   | B   | C   |
|-------------------|--|-----|-----|-----|
| SIZE / DC         |  |     |     |     |
| 1" - 3"           |  | 12" | 18" | 12" |
| 4" & UP           |  | 24" | 24" | 12" |



SEE CITY STANDARDS W-17  
FOR ADDITIONAL REQUIREMENTS

\*(1) - FIRE SPRINKLER SYSTEMS REQUIRE OSY VALVES; FOR DOMESTIC USE 3" AND LARGER, USE NRS VALVES.

\*(2) - MUST BE ABOVE 100-YEAR FLOOD ELEVATION ESTABLISHED BY FEMA.

|   |                        |                    |          |
|---|------------------------|--------------------|----------|
| ENGINEERING DEPARTMENT  |                        | CITY OF MERCED, CA |          |
| REDUCED PRESSURE PRINCIPLE BACKFLOW PREVENTER WITH COMPOUND METER |                        |                    |          |
| DRAWN: KGE  | APPROVED BY:           | DATE:              | W-9A     |
| DATE: 6/04  | <i>David L. Tucker</i> | 11/15/04           |          |
| REVISID:  | CITY ENGINEER          |                    |          |
|   |                        |                    | SHEET OF |