

# ILS RWY 30

MERCED MUNI-MACREADEY FIELD (MCE)

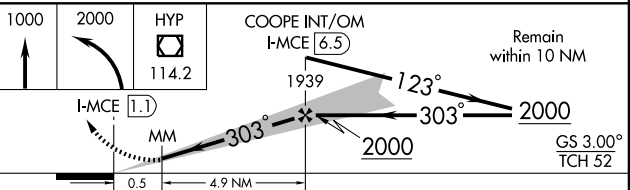
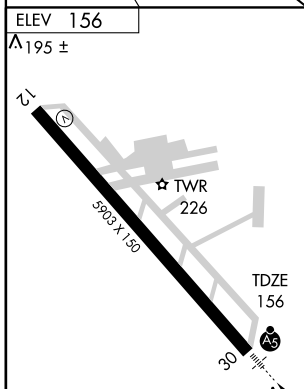
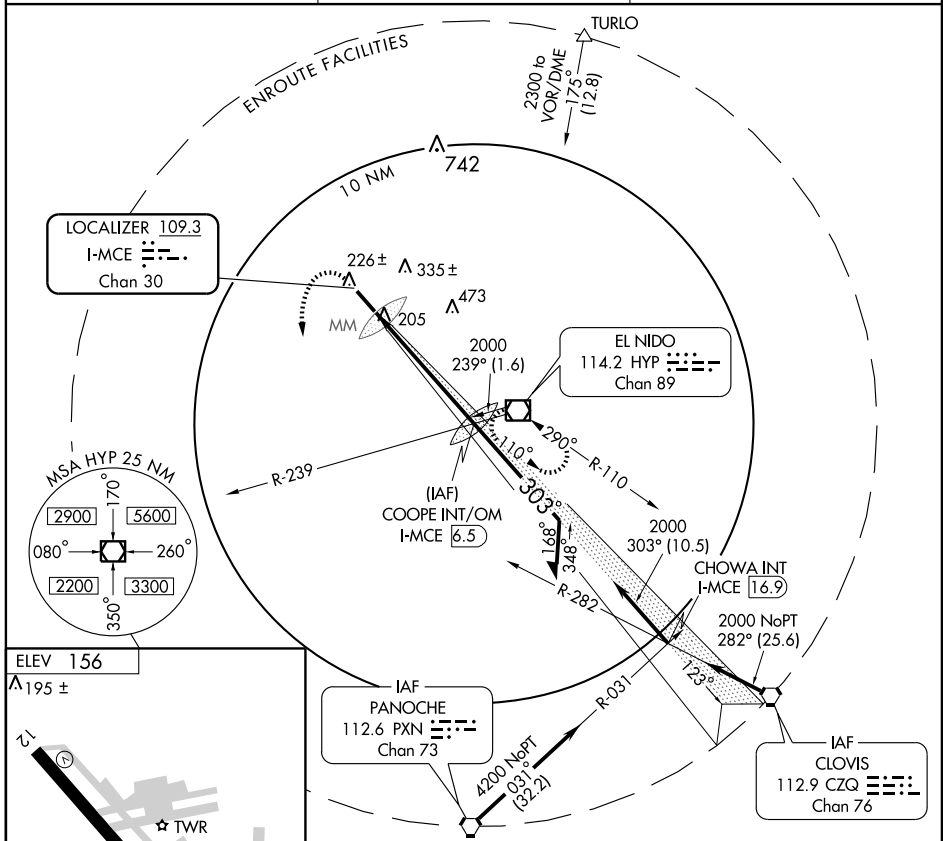
LOC/DME I-MCE <b>109.3</b> Chan 30	APP CRS <b>303°</b>	Rwy Idg TDZE <b>156</b> Apt Elev <b>156</b>	<b>5903</b>
--	------------------------	---	-------------

**▼** For inoperative MALS/R increase S-LOC 30 Cat D visibility to 1.  
**▲** Circling not authorized northeast of Rwy 12-30.



**MISSED APPROACH:** Climb to 1000 then climbing left turn to 2000 direct HYP VOR/DME and hold.

ASOS <b>132.175</b>	NORCAL APP CON <b>120.95 269.45</b>	UNICOM <b>122.7</b> (CTAF) <b>0</b>
------------------------	--	--



CATEGORY	A	B	C	D
S-ILS 30	356-½ 200 (200-½)			
S-LOC 30	480-½ 324 (400-½)			480-¾ 324 (400-¾)
CIRCLING	540-1 384 (400-1)	620-1 464 (500-1)	620-1½ 464 (500-1½)	720-2 564 (600-2)

MERCED, CALIFORNIA  
Amdt 14B 04106

37°17'N-120°31'W

MERCED MUNI-MACREADEY FIELD (MCE)  
**ILS RWY 30**

SW-2, 16 MAR 2006 to 13 APR 2006

SW-2, 16 MAR 2006 to 13 APR 2006