

LOC/DME I-MCE <b>109.3</b> Chan <b>30</b>	APP CRS <b>123°</b>	Rwy Idg <b>5903</b> TDZE <b>155</b> Apt Elev <b>156</b>
---	------------------------	---

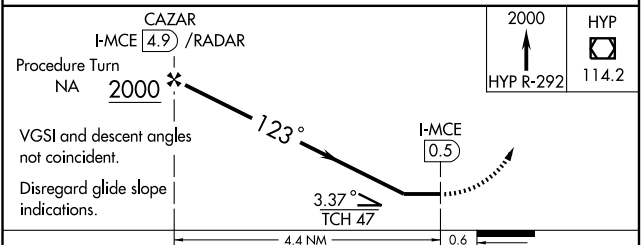
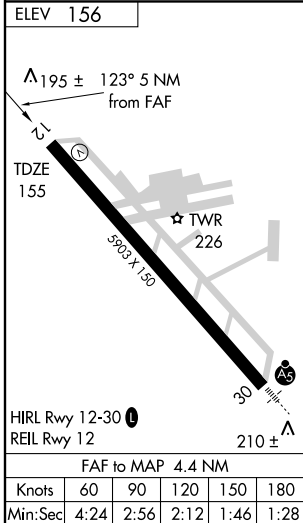
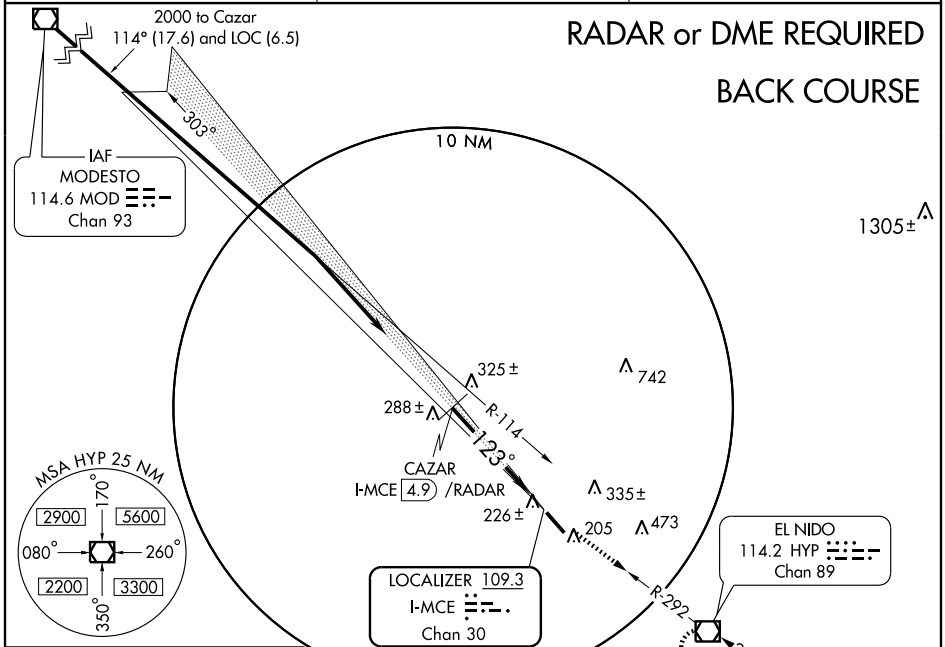
# LOC BC RWY 12

MERCED MUNI-MACREADY FIELD (MCE)

**⚠** Circling not authorized northeast of Rwy 12-30. **⚠** MISSED APPROACH: Climb to 2000 via HYP R-292 to HYP VOR/DME and hold.

ASOS <b>132.175</b>	NORCAL APP CON <b>120.95 269.45</b>	UNICOM <b>122.7</b> (CTAF) <b>⓪</b>
------------------------	--	--

**RADAR or DME REQUIRED**  
**BACK COURSE**



CATEGORY	A	B	C	D
S-12	520-1	365 (400-1)		520-1½ 365 (400-1½)
CIRCLING	540-1 384 (400-1)	620-1 464 (500-1)	620-1½ 464 (500-1½)	720-2 564 (600-2)

SW-2, 16 MAR 2006 to 13 APR 2006

SW-2, 16 MAR 2006 to 13 APR 2006