

MERCED, CALIFORNIA

AL-665 (FAA)

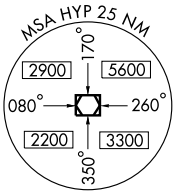
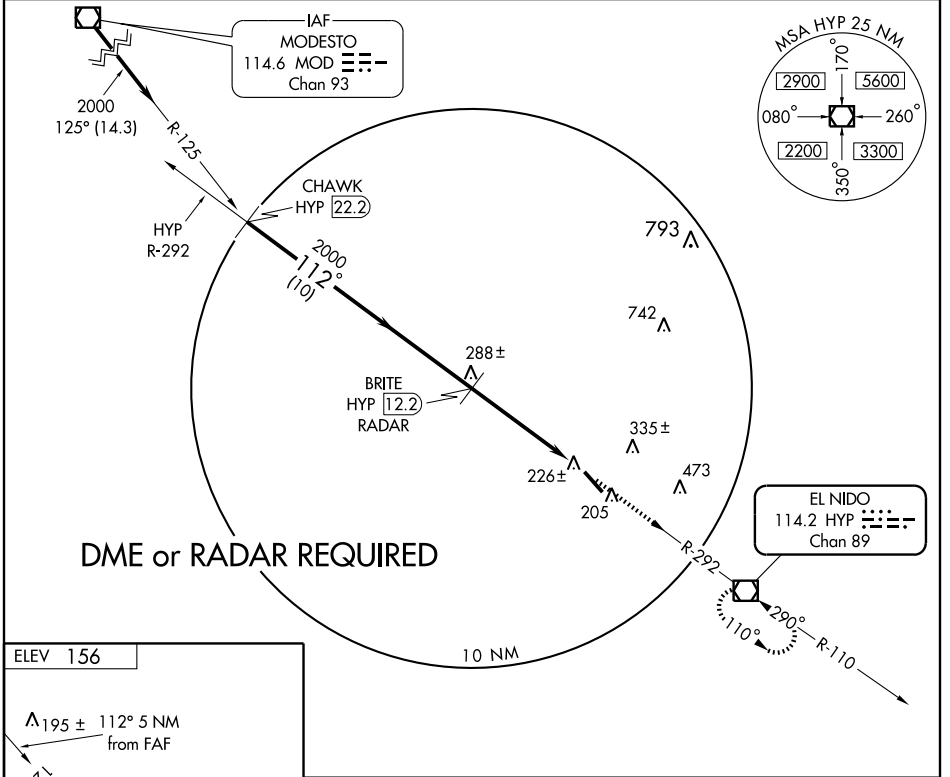
VOR/DME HYP 114.2 Chan 89	APP CRS 112°	Rwy Idg TDZE 155 Apt Elev 156	5903
---	------------------------	---	-------------

VOR RWY 12

MERCED MUNI-MACREADY FIELD (MCE)

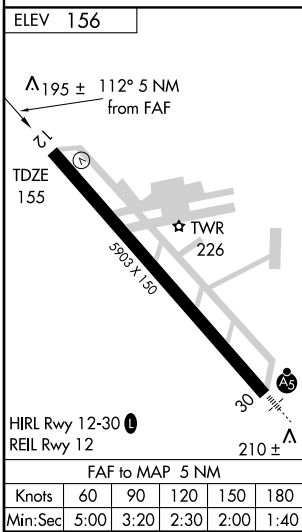
⚠ Circling not authorized northeast of Rwy 12-30. **⚠** MISSED APPROACH: Climb to 2000 via HYP R-292 to HYP VOR/DME and hold.

ASOS 132.175	NORCAL APP CON 120.95 269.45	UNICOM 122.7 (CTAF) 📻
------------------------	--	--



SW-2, 16 MAR 2006 to 13 APR 2006

SW-2, 16 MAR 2006 to 13 APR 2006



CHAWK HYP (22.2) Procedure Turn NA 2000 — 112° — 2000 VGSI and descent angles not coincident. 3.39° TCH 47 HYP (7.2)	2000	HYP		
	HYP R-292	114.2		
CATEGORY	A	B	C	D
S-12	520-1 365 (400-1)			520-1½ 365 (400-1½)
CIRCLING	540-1 384 (400-1)	620-1 464 (500-1)	620-1½ 464 (500-1½)	720-2 564 (600-2)

MERCED, CALIFORNIA
Amdt 7B 03135

37°17'N-120°31'W

MERCED MUNI-MACREADY FIELD (MCE)
VOR RWY 12