

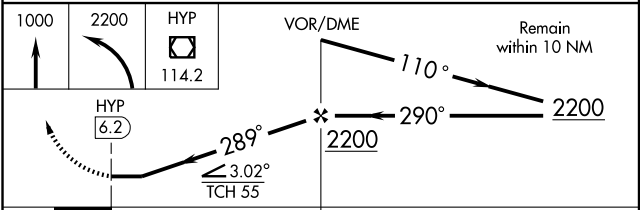
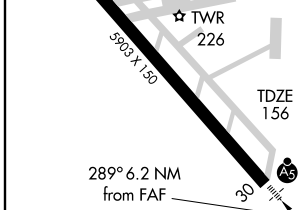
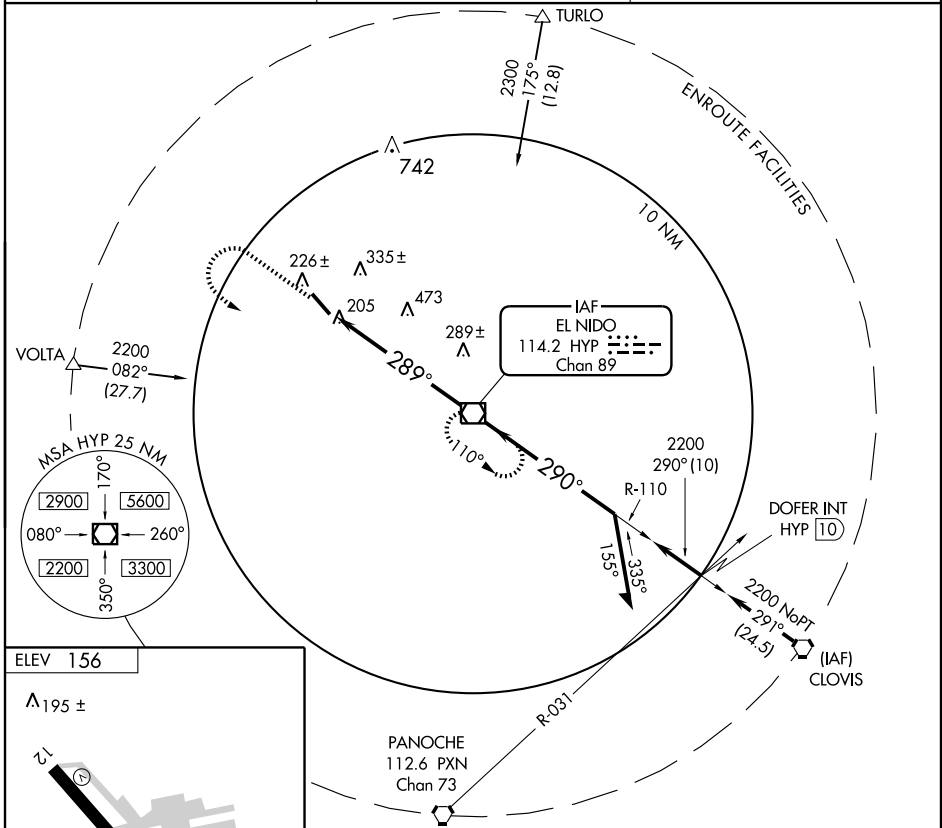
VOR RWY 30

MERCED MUNI-MACREADY FIELD (MCE)

VOR/DME HYP 114.2 Chan 89	APP CRS 289°	Rwy Idg 5903 TDZE 156 Apt Elev 156
---	------------------------	---

<p>⚠ Circling not authorized northeast of Rwy 12-30. For inoperative MALSRL increase S-30 Cat D visibility to 1 1/4 .</p>	<p>MALSRL </p>	<p>MISSED APPROACH: Climb to 1000 then climbing left turn to 2200 direct HYP VOR/DME and hold.</p>
--	---	---

ASOS 132.175	NORCAL APP CON 120.95 269.45	UNICOM 122.7 (CTAF) 0
------------------------	--	---------------------------------



FAF to MAP 6.2 NM					
Knots	60	90	120	150	180
Min:Sec	6:12	4:08	3:06	2:29	2:04
CATEGORY	A	B	C	D	
S-30	540-1/2			384 (400-1/2)	540-1 384 (400-1)
CIRCLING	540-1 384 (400-1)	620-1 464 (500-1)	620-1/2 464 (500-1/2)	720-2 564 (600-2)	

VOR RWY 30

SW-2, 16 MAR 2006 to 13 APR 2006

SW-2, 16 MAR 2006 to 13 APR 2006