

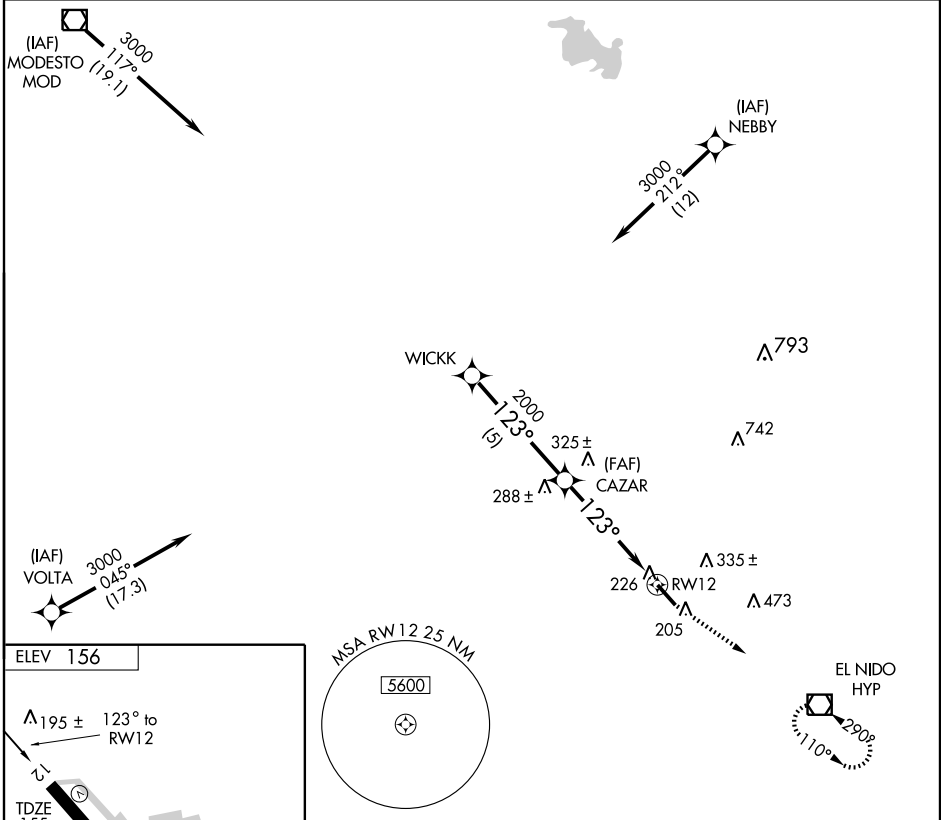
GPS RWY 12

MERCED MUNI-MACREADY FIELD (MCE)

APP CRS 123°	Rwy Idg 5903
	TDZE 155
	Apt Elev 156

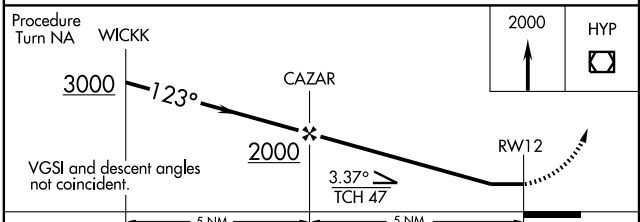
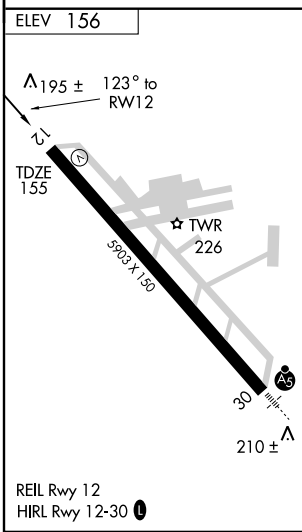
NA Circling not authorized northeast of Rwy 12-30. MISSED APPROACH: Climb to 2000 direct HYP VOR/DME and hold.

ASOS 132.175	NORCAL APP CON 120,95 269.4	UNICOM 122.7 (CTAF) 0
------------------------	---------------------------------------	---------------------------------



SW-2, 16 MAR 2006 to 13 APR 2006

SW-2, 16 MAR 2006 to 13 APR 2006



CATEGORY	A	B	C	D
S-30		520-1 365 (400-1)		520-1¼ 365 (400-1¼)
CIRCLING	540-1 384 (400-1)	620-1 464 (500-1)	620-1½ 464 (500-1½)	720-2 564 (600-2)

GPS RWY 12