

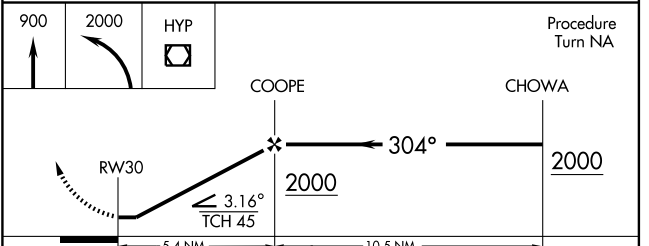
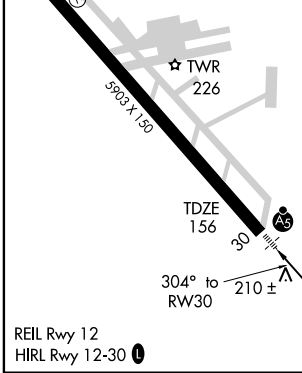
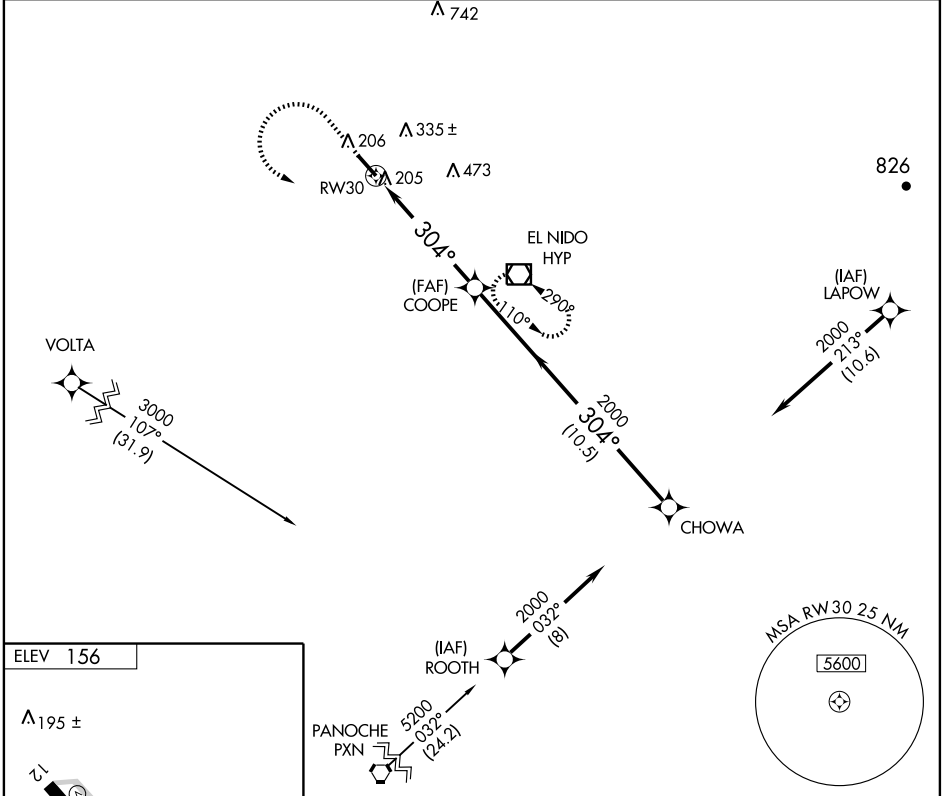
GPS RWY 30

MERCED MUNI-MACREADY FIELD (MCE)

APP CRS	Rwy Idg	5903
304°	TDZE	156
	Apt Elev	156

<p>▽ For inoperative MALSR increase S-30 Cat D visibility to 1¼.</p> <p>△ NA Circling not authorized northeast of Rwy 12-30.</p>	<p>MALSR</p>	<p>MISSED APPROACH: Climb to 900 then climbing left turn to 2000 direct HYP VOR/DME and hold.</p>
--	---------------------	--

ASOS 132.175	NORCAL APP CON 120.95 269.4	UNICOM 122.7 (CTAF) 0
------------------------	---------------------------------------	---------------------------------



CATEGORY	A	B	C	D
S-30	520-½ 365 (400-½)			520-1 365 (400-1)
CIRCLING	540-1 384 (400-1)	620-1 464 (500-1)	620-1½ 464 (500-1½)	720-2 564 (600-2)

GPS RWY 30

SW-2, 16 MAR 2006 to 13 APR 2006

SW-2, 16 MAR 2006 to 13 APR 2006